



Discovery





Discovery

This sustainable luxurious yarn dyed upholstery fabric is woven on a jacquard loom. A combination of 30% Recycled Polypropylene, 30% Recycled Polyester and 40% Virgin Polyester. Chenille boucle multicoloured yarns create this beautiful upholstery textile.

The multicoloured sustainable upholstery textile is unique in its kind and will give the sofa, chair, or bed an exclusive look & feel.

Suitable for all types of upholstery and perfect to upholster in many different interiors and styles.

Due to the construction of Discovery, we recommend a minimum seam allowance of minimum 1 cm and another kind advice is to overlock all seams for more stability, especially with tight upholstered furniture. For loose fitted upholstery models, please know that Discovery is machine-washable at 30 degrees Celsius*.

During usage, a certain hairiness may appear, kindly note that this can be taken away with a pilling razor, this has no further influence on the durability or quality of Discovery.

Discover the softness, rich appearance and sustainable experience of this textile and for further information please check www.fabraa.com

- Always be careful with sharp or rough objects such as watches, buckles, or velcro, as they may damage the fabric.
- When a loop does occur, it can be easily pushed back into the fabric with a blunt object.

- We recommend to wash the cover inside out and immediately place the cover back to the piece of furniture, slightly damp, after washing.

Fabraa Upholstery fabrics with a conscience. We make sustainable choices easy by offering a wide range of high-quality, affordable upholstery fabrics with consideration for the conditions throughout the supply chain.

Composition

/ faceside 30%RPP 30%RPET 40%PES

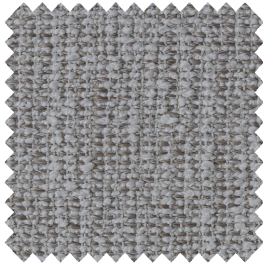
/ backside n/a

/ recycled polyester flatweave

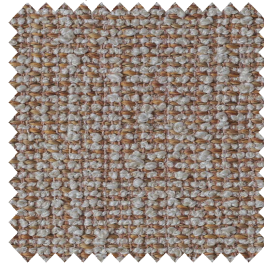
*R=recycled

Suitable for

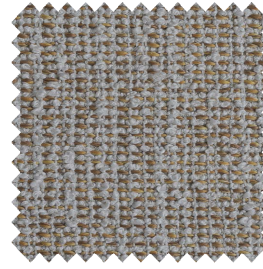
sofa's, beds, chairs with fitted and loose fitting upholstery



beige 05



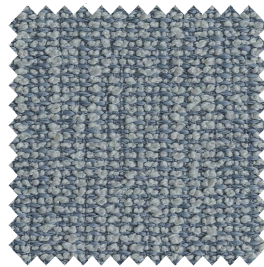
cognac 28



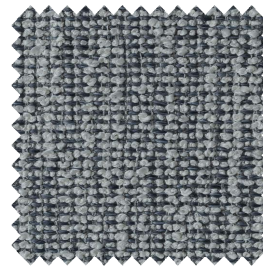
gold 132



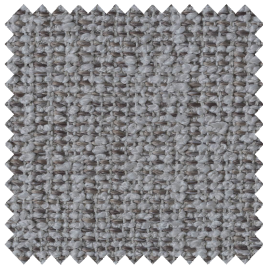
green 55



iceblue 43



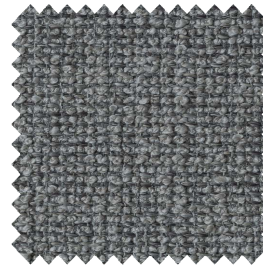
indigo 90



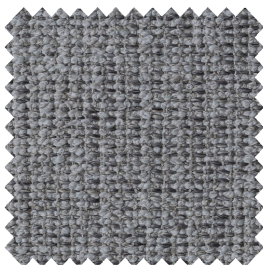
liver 10



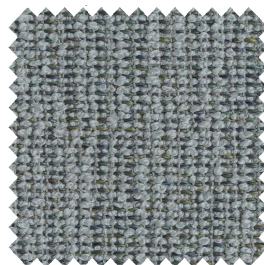
natural 01



plumb 168



shitake 124



teal 198

Please note: colours may vary according to your screen settings.

Discovery - Article passport

A sustainable luxurious yarn dyed textile woven on a jacquard loom.

Available from stock in a wide range of contemporary and commercial colours.

Product characteristics

Productgroup	recycled polyester flatweave
Applications	sofa's, beds, chairs with fitted and loose fitting upholstery
Composition faceside	30%RPP 30%RPET 40%PES
Composition backside	n/a
Bonding / Coating	n/a
Statistic code	54077300
Dyeing method	yarn dyed
Available colours	11
Packaging	transparent plastic

Durability specifications

Test	Test specification	Executed by laboratory:	Unit	Testresult		Norm RAL GZ 430/4:2019-01		Norm DIN EN 14 465:2006-09
				Dry	Wet	DGM	DGM+	
Abrasion resistance - yarn breakage	DIN EN ISO 12947-1:2007-04, DIN EN ISO 12947-2:2017-03	CTL	cycles	40.000		min. 0	min. 0	A
Pilling	DIN EN ISO 12945-2:2000-11. 2000 cycles	CTL	grade	4-5		min. 3-4	min. 4	A
Colour fastness to light	DIN EN ISO 105-BO2:2014-11. Process 3, exposure level 5							
	light colours	CTL	grade	4-5		min. 4	min.5	B
	middle colours	CTL	grade	4-5		min. 4	min.5	B
Colour fastness to rubbing	DIN EN ISO 105-X12:2016-11							
	light colours	CTL	grade	4-5	4-5	dry: 4, wet: 3	dry: > 4, wet: 3-4	A/A
	middle colours	CTL	grade	4-5	4-5	dry: 4, wet: 3	dry: > 4, wet: 3-4	A/A
Colour fastness to rubbing	DIN EN ISO 105-X12:2016-11							
	dark colours	CTL	grade	4-5	4-5	dry: 4, wet: 3	dry: > 4, wet: 3-4	A/A
	light colours	CTL	grade	4-5	4-5	dry: 4, wet: 3	dry: > 4, wet: 3-4	A/A
Ignitability (cigarette test)	BS 5852 part 1 (1979) from The Furniture and Furnishing (Fire) (Safety) regulations: 1988 No. 1324. Schedule 4 part 1 Ignition source 0: cigarette	CTL		passed				

Processing specifications

Minimum workable width in centimeters	± 138
Roll length in meters	± 30
Material weight in grams per linear meter	± 786

Test	Test specification	Executed by laboratory:	Unit	Testresult		Norm RAL GZ 430/4:2019-01		Norm DIN EN 14 465:2006-09
				Warp	Weft	DGM	DGM+	
Tensile strength	DIN EN ISO 13934-1:2013-08	CTL	Newton	1.270	1.113	min. 350	min. 400	A/A
Tear growth resistance	DIN EN ISO 13937-3:2000-06	CTL	Newton	115,0	114,0	min. 25	min. 30	A/A
Resistance to seam slippage	DIN EN ISO 13936-2:2004-07. Load 180 N	CTL	mm	3,8	2,6	max. 5	max. 4	A/A
Delamination	DIN 53530:1981-02	CTL	Newton	n/a	n/a	n/a	n/a	n/a
Chemical substances	REACH	Centexbel		passed				
	Oeko-Tex, product class II	Centexbel		certified				

Cleaning specifications

Test	Test specification	Executed by laboratory:	Unit	Testresult		Norm RAL GZ 430/4:2019-01		Norm DIN EN 14 465:2006-09
				Warp	Weft	DGM	DGM+	
Dimensional change for washing 30 degrees celcius / air drying	DIN EN ISO 5077:2008-04, DIN EN ISO 6330:2013-02, DIN EN ISO 3759:2011-08	CTL	%	n/a	n/a	n/a	n/a	n/a

- We recommend to wash the cover inside out and immediately place the cover back to the piece of furniture, slightly damp, after washing.



FABRAA[®]
fabrics with a conscience

Textafoam b.v.

La Défense 11 | 5026 SC Tilburg

P.O. Box 12 | 5050 AA Goirle

The Netherlands

T +31(0)13 534 5934

F +31(0)13 534 7586

E info@fabraa.com

www.fabraa.com